

Vscan Air

#visual_stethoscope



GE HealthCare

© 2024 GE HealthCare. GE is a trademark of General Electric Company used under trademark license.



Continued legacy of leadership in handheld ultrasound

2010 Vscan™



The first color pocket-sized ultrasound revolutionized the way doctors see patients with an additional tool for their physical exams.

2014 Vscan™ with Dual Probe



Dual probe (2-in-1) technology enables effortless scanning without switching probes between, or during, exams. It covers a wide range of clinical applications.

2017| 2018 Vscan Extend™



A dedicated and hardwired device with a 5" touchscreen, Vscan Extend offers an integrated touchscreen interface and apps.

2021 | 2023 Vscan Air™ CL & SL



A wireless handheld ultrasound that delivers crystal-clear images and in a small, lightweight and dual-probe.



50,000+
units globally



Backed by **250+**
clinical papers



Installed in
100+ countries



Used in a variety of
clinical specialties
and care areas

Vscan vision for the future

To transform the physical exam – make it easier to acquire and interpret high quality ultrasound images via an ecosystem of AI powered applications to drive clinical excellence, workflow efficiency and productivity.

Vscan Air™

2-in-1 Power 

Vscan Air CL



Vscan Air SL



Dual Probe

- 2 transducers in a single device
- Image quality optimized for deep and shallow scanning; no compromising on image quality

A broad range of applications

- See into the whole body with a single device
- Designed so you only need one in your pocket

The Vscan Air portfolio

★ Only available on sector probe of Vscan Air SL

Powered by



XDclear[★]

Lightweight. Waterproof. Drop-proof

Convex

- Frequency 2-5 MHz
- Max depth 24 cm
- Footprint 64 mm x 16 mm



Vscan Air CL

Linear

- Frequency 3-12 MHz
- Max depth 8 cm
- Footprint: 40mm X 7mm



Vscan Air SL

Sector

- Frequency 1.6 – 3.7 MHz
- Max depth 24 cm
- Footprint: 22mm X 17mm



Linear

- Frequency 3-12 MHz
- Max depth 8 cm
- Footprint: 40mm X 7mm



M-Mode



Pulsed Wave



Fetal Biometry



Annotation



Compatible with mobile/tablet



Optimized for your own mobile device

- Optimized to work with a range of Android™ and Apple® iOS® smartphones and tablets*
- Supports portrait and landscape orientations to optimize image size and ergonomics for different use scenarios



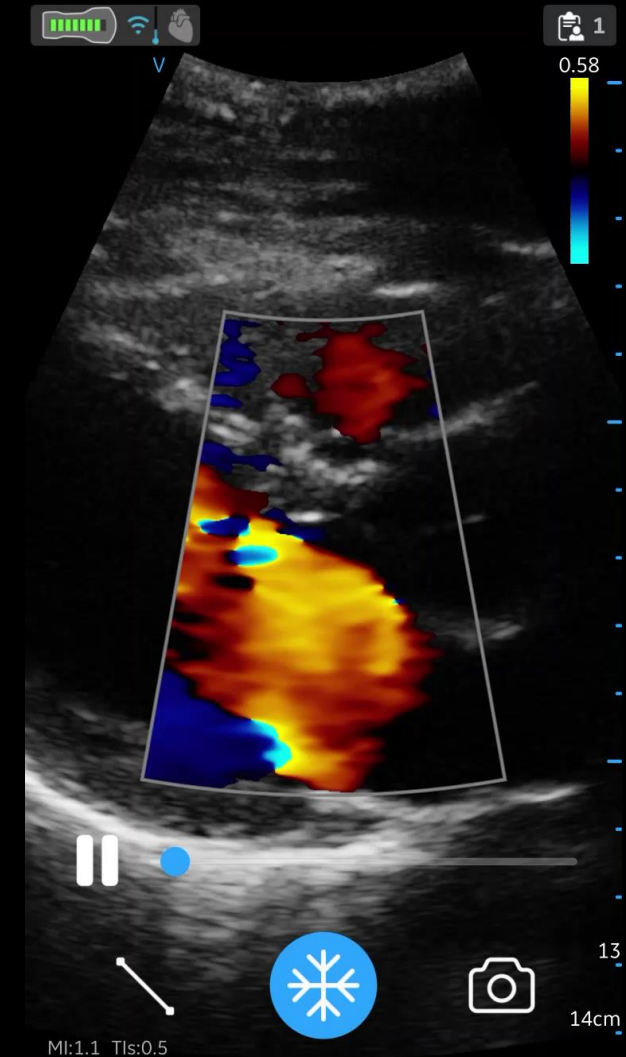
Google Play



Exceptional Image Quality

Dual-probe + deep scanning = crystal clear images

- Same quality images as some large, expensive systems
- Single Crystal Lens with 128 physical channel beamforming
- Harmonic Imaging
- **SignalMax™ Technology** for image quality in the palm of your hand

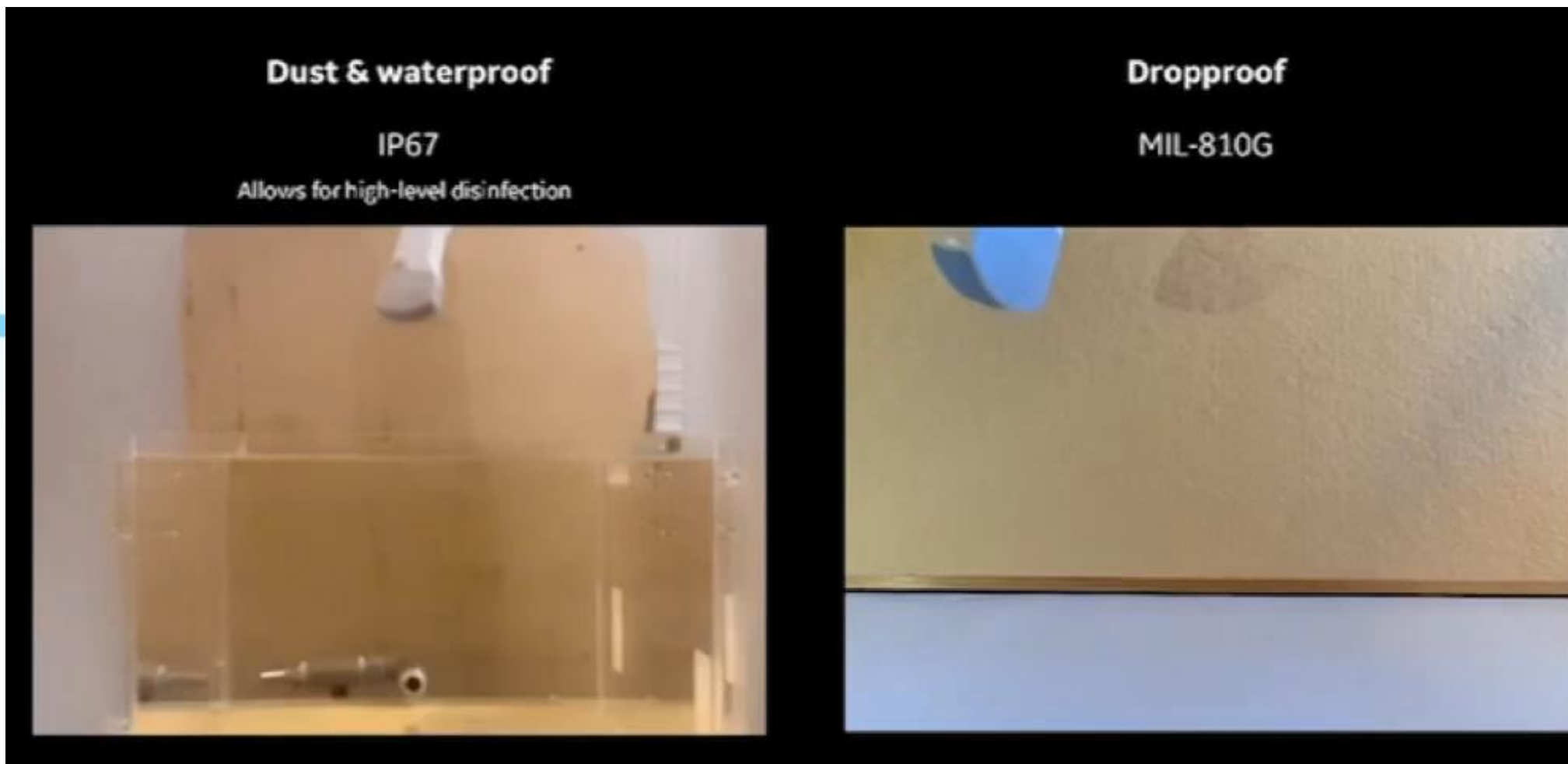




Durability Guaranteed



- Withstands drops: MIL-810G (516.6)
- Easy to clean: IP67 waterproof

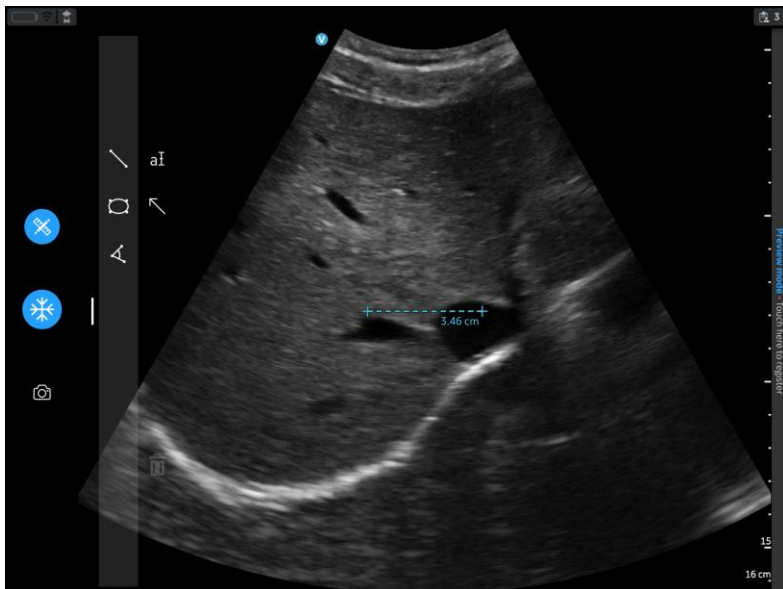




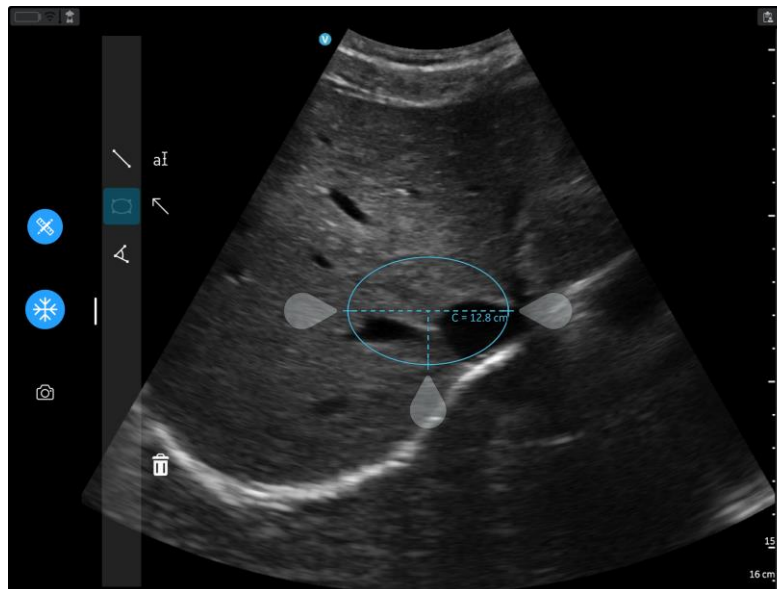
Basic Measurements



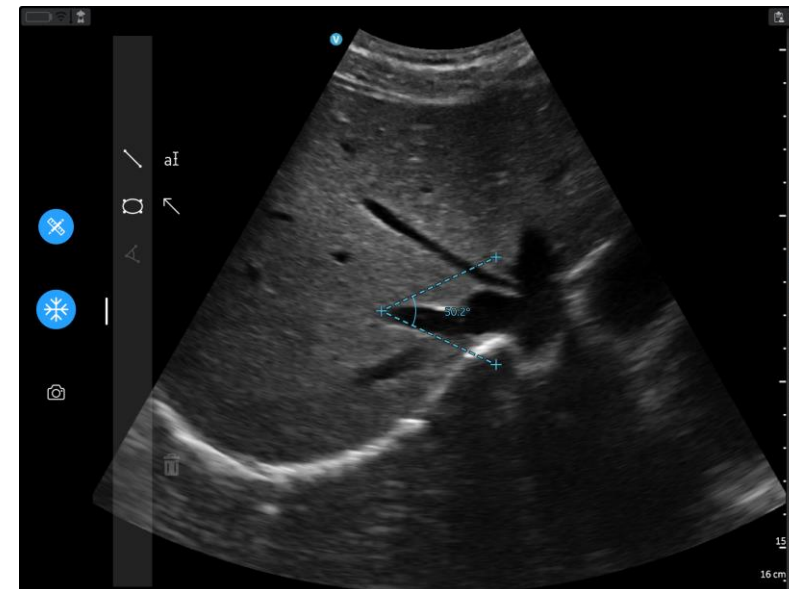
Distance



Circumference



Slope



Centre line Marker and Focus Marker



6-Slider TGC





PW Doppler



Vscan Air R2

Pulsed Wave Doppler



PW Doppler

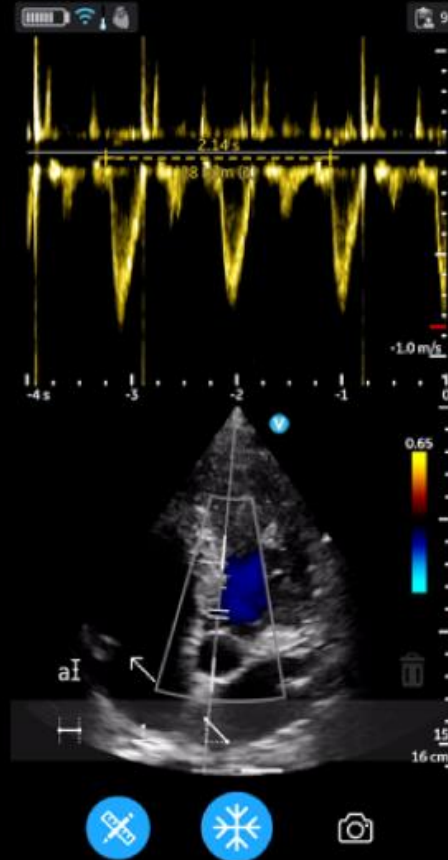
Vscan Air R2

Pulsed Wave Doppler

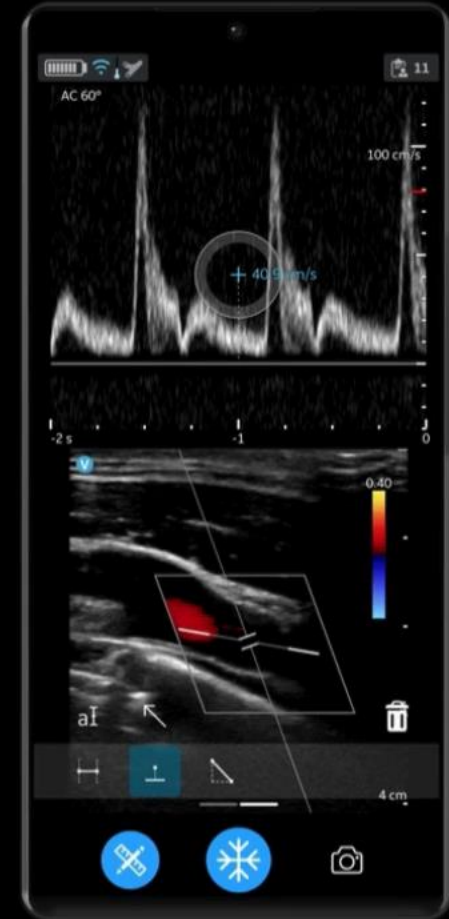
Thumb-friendly user interface, for ease of moving PW sample volume, adjusting time motion viewer and performing measurements.

-  Velocity
-  Slope
-  Heart Rate
-  Doppler Sound

Cardiac – Apical
4 chamber



Vascular- Carotid Artery



Vscan Air R2

Pulsed Wave Doppler



M-Mode

Vscan Air R2

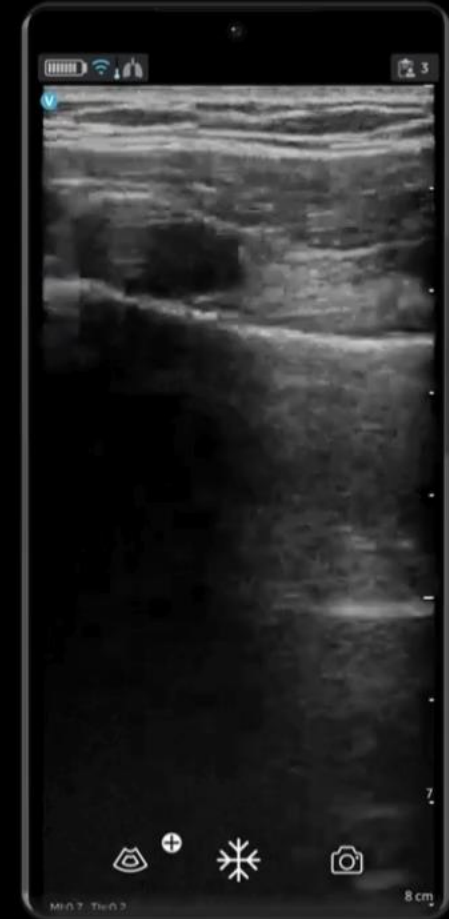
M-Mode

Thumb-friendly user interface, for ease of moving M-Mode cursor, adjusting time motion viewer and performing measurements.

 Distance

 Slope

 Heart Rate





M-Mode

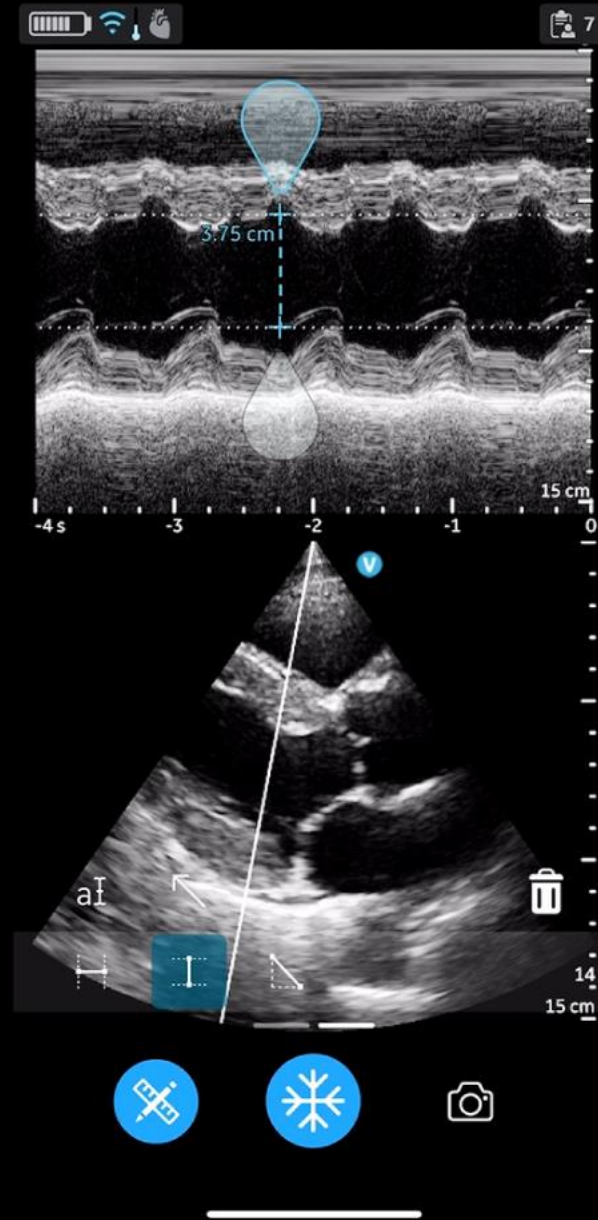
Vscan Air R2

M-Mode

Thumb-friendly user interface, for ease of moving M-Mode cursor, adjusting time motion viewer and performing measurements.

-  Distance
-  Slope
-  Heart Rate

Cardiac - PLAX



Pulmonary – Lung sweep





Fetal Biometry



Vscan Air Integration in your workflow

*The content contains graphic imagery and is not suitable for all viewers. Viewer discretion is advised.





Use of Vscan Air CL in OT

Use of Vscan Air CL at bedside



Use of Vscan Air CL in emergency





GE HealthCare